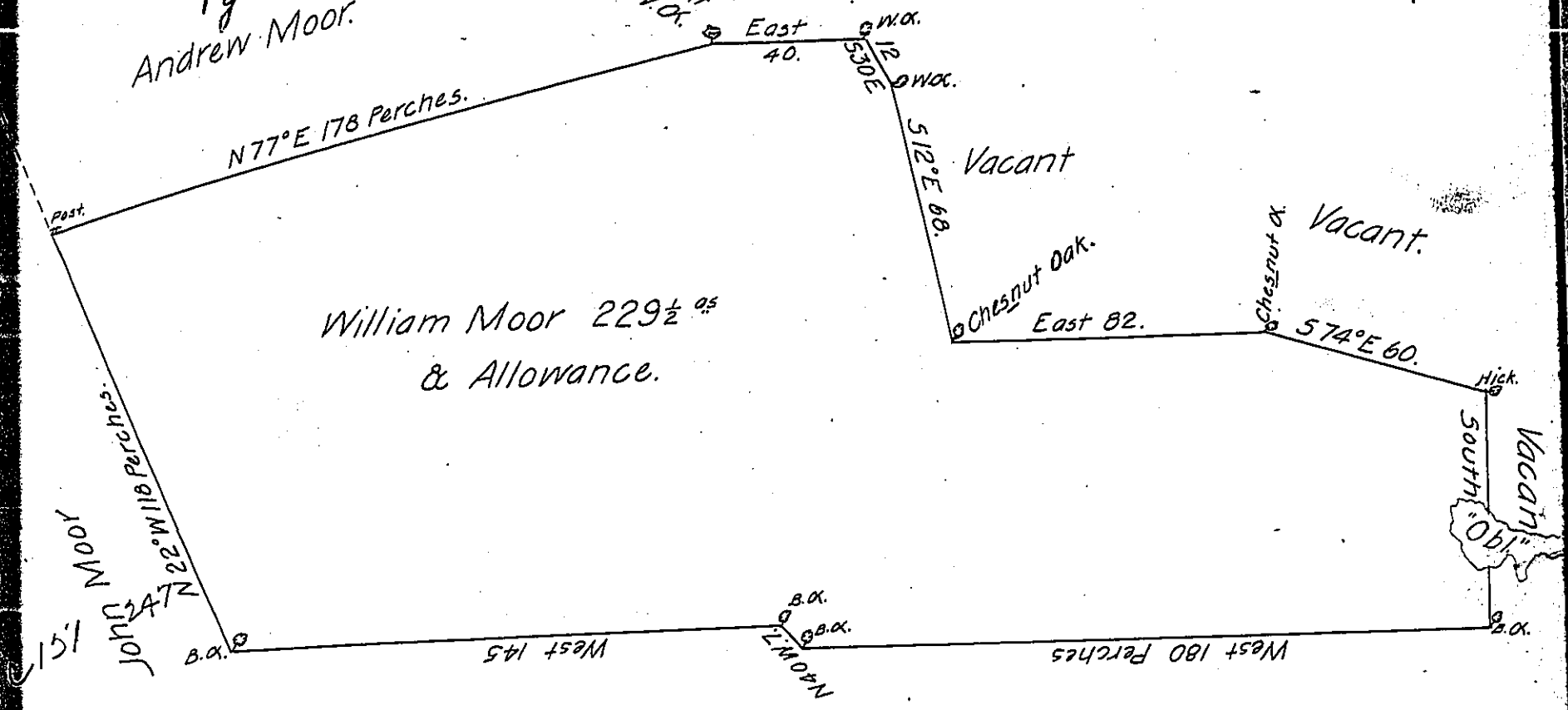


Pg 87  
Andrew Moor.

Vacant. C. 31-268  
Begin at  
a W. C.



William Moor 229 1/2 acs  
& Allowance.

151 MOOR  
JOHN 2472  
22° W 118 Perches.

Christian Swartz

Christian Swartz.

C. 418. 34

A Draught of a Tract of Land Situate Part in Derry and Part in Don-  
 egal Township in the County of Lancaster containing two hundred & twenty  
 nine Acres and an half Acre and the Allowance of Six Acres & Cent for Roads  
 & Highways Surveyd for Andrew Moor in Trust for the use of his Son William  
 Moor a Minor the first day of January 1753 by Thomas Cookson Esquire late  
 Deputy Surveyor of Lancaster County in pursuance of a Warrant bearing  
 Date the 20<sup>th</sup> day of October 1752 ~

Protracted from the Field Book & calculated

& Geo. Stevenson D.S. & one

of the Exec<sup>rs</sup> of Thos. Cookson Deced.

To Nicholas Scull Esqr. Surv<sup>r</sup> Gen<sup>l</sup>

IN TESTIMONY that the above is a copy of the original remaining on file in  
 the Department of Internal Affairs of Pennsylvania, made  
 conformably to an Act of Assembly approved the 16th day of  
 February, 1833, I have hereunto set my Hand and caused  
 the Seal of said Department to be affixed at Harrisburg,  
 this sixteenth day of November 1905

*Loose D. Brown*  
 Secretary of Internal Affairs.